

TRUCK, AMBULANCE, LIGHT, 4 LITTER, FFR, WINCH, MC2-LAND ROVER 110 6X6

RELOCATION OF THE SEVEN PIN AUXILIARY PLUG AND HARNESS ASSEMBLY

MODIFICATION INSTRUCTION

This instruction is authorised for use by command of the Chief of the General Staff. It provides direction, mandatory controls and procedures for the operation, maintenance and support of equipment. Personnel are to carry out any action required by this instruction in accordance with GENERAL A 001.

**Introduction**

1. This instruction details the relocation of the seven pin auxiliary plug and harness assembly from the outside face to the inner side of the right rear chassis upright, to prevent damage to the wiring during off road operation. A new bracket has been introduced to mount the plug and harness. The relocation of the plug was carried out in production from Jul 90 and rework only affects early ambulance variants.

**General**

2. **Associated Publications:**
  - a. EMEI WORKSHOP A 850 - Modifications, Trial Modifications and Local Modifications to Equipment; and
  - b. EMEI WORKSHOP A 851 - Modifications to Equipment - use of Modification Record Plates and Documentary Requirements.
3. **Authority:**
  - a. Project Perentie TVA TL 9081; and
  - b. Land Rover Engineering Changes 1574 and 2121.
4. **Modification Application.** All Truck, Ambulance, Light Land Rover 110 6x6 up to and including ARN 50619.
5. **Items Affected.** 7 pin auxiliary plug and harness assembly.
6. **Priority - Group 2.** All applicable equipment is to be modified:
  - a. when next in workshops for repair, or
  - b. prior to issue from depot or pool stock.

**NOTE**

Where modifications would delay priority issues of depot or pool stock, equipment may be issued unmodified providing the Record Book for Service Equipment (GM 120) is endorsed with details of the outstanding modification.

7. **Action Required.** Actions detailed in this instruction are to be performed by RAEME units or sub-units authorised to carry out unit, field or base repairs.
8. **Estimated Manhours to Perform.** For initial planning purposes only, it is estimated that this modification will take 1.0 manhours to perform.
9. **Stores Required.** The stores required are listed in Table 1 and are to be demanded through Moorebank Log Gp. Parts kits to complete the modification are not to be procured locally. Kits are to be ordered on the basis of one kit per vehicle and are not to be ordered for stock.

**Trailer Plug Relocation**

10. **Proceed as follows:**
  - a. Disconnect the vehicle battery.
  - b. Locate the existing 7 pin auxiliary plug on the right rear chassis upright, as shown in Figure 1.
  - c. Disconnect the plug cable from the chassis harness at the multi pin connector located on the rear chassis rail and the earth wire at the bullet connector.

Table 1 - Stores Required To Be Demanded Through Moorebank Log Gp

Item	NSN	Mfr Part No	Designation / Description	Qty per Equip
1	2540-97-121-2998	HYG6045	Kit, Bracket, Seven Pin Auxiliary Trailer Plug	1

UNCONTROLLED WHEN PRINTED

Table 2 - Items Contained in Modification Kit (not to be ordered to complete modification)

Item	NSN	Mfr Part No	Designation / Description	Qty per Equip
1		HYG3732	Bracket	1
2	5305-99-796-7536	SE106201	Screw	3
3	<del>5310-99-122-8474</del> 66-575-9440	WA106041	Washer Plain	6
4	5310-99-139-5313	NY106041	Nut Nyloc	3
5		HYG6046	Installation Drawing	1

All item numbers in para 10 refer to the parts listed in Table 2.

- d. Remove the three mounting screws holding the 7 pin plug to the chassis and remove the plug and harness assembly from the rear post of the chassis (retain screws for remounting of the plug).
  - e. Remove the chassis bolt then position and secure the new bracket (Item 1) to the front face of the upright from which the plug has just been removed using screws, nuts and washers (Items 2,3,4) as shown in Figure 2.
  - f. Pass the plug cable and connector through the mounting bracket and then through the chassis upright, feeding all the cable through the hole.
  - g. Secure the 7 pin plug to the bracket using three original screws as shown in Figure 3.
  - h. Reconnect the plug cable assembly to the multi pin connector and the earth wire to the bullet connector.
  - i. Reconnect the vehicle battery.
11. **Post Modification Testing.** Test the vehicle lighting system for correct operation.
12. **Recording Action.** On completion of the modification:
- a. deface the number 20 on the modification plate located on the drivers seat base; and
  - b. enter the details of the modification in part 3 on the GM 120, Record Book for Service Equipment, for the subject vehicles.

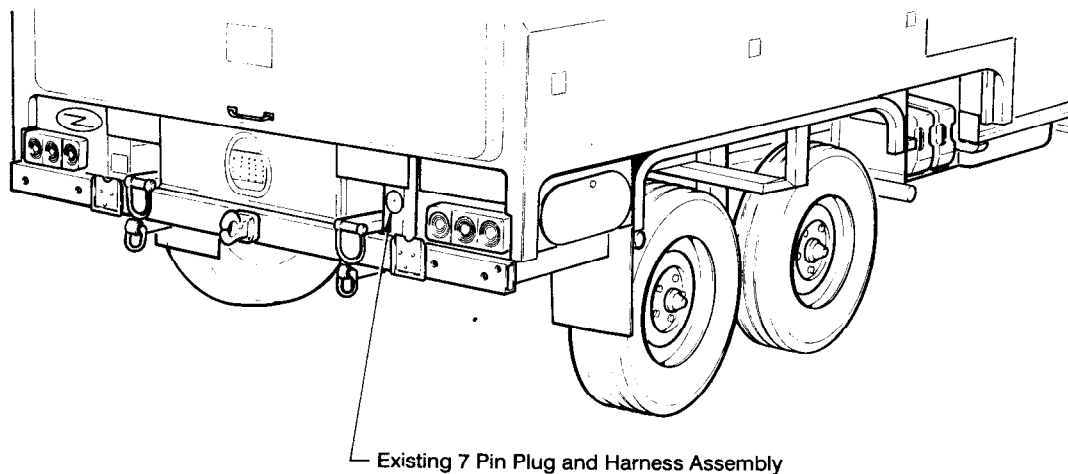
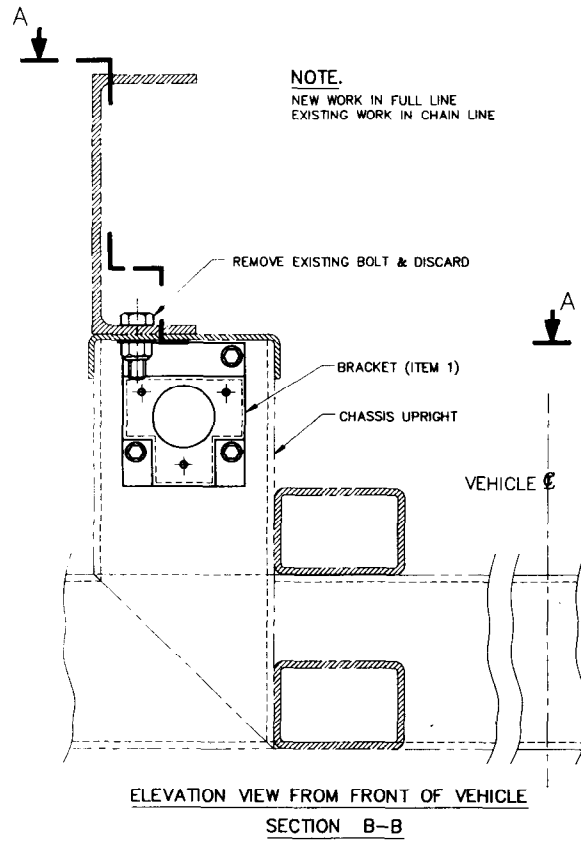
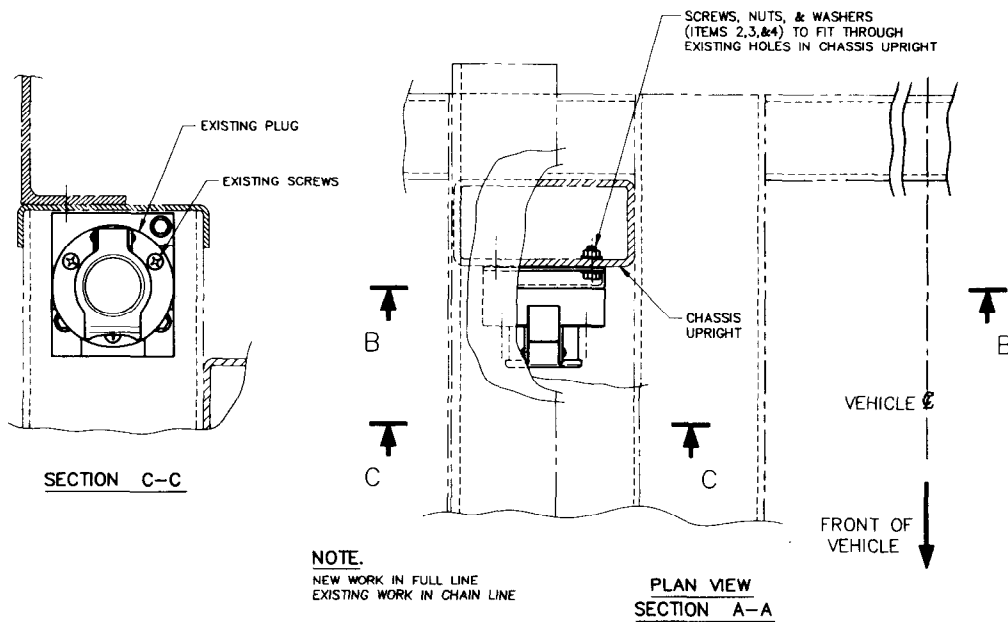


Figure 1 - Existing 7 Pin Auxiliary Plug Location

UNCONTROLLED WHEN PRINTED



**Figure 2 - Position of 7 Pin Auxiliary Plug Mounting Bracket**



**Figure 3 - Relocated 7 Pin Auxiliary Plug**

**END**

List VEHICLE G 22.0 - Code 1 (MEA 900150)

UNCONTROLLED WHEN PRINTED