

TRUCK UTILITY, LIGHTWEIGHT, MC2  
TRUCK UTILITY, LIGHTWEIGHT, MC2, W/WINCH  
TRUCK PANEL, LIGHTWEIGHT, SVY, FFR  
FITTING OF LASHING RINGS  
MODIFICATION INSTRUCTION

Issue of this instruction is authorized by CONMEA.

Introduction

1. This instruction details the fitting of lashing rings in the rear cargo section allowing tie down points for securing heavy loads.

Note:

1. NSN and Designation used in this instruction were current at the date of issue. If twelve months or more have expired since issue, the NSN should be checked for supersession.

General

2. Estimated Modification Time. 4 hrs (Initial planning only).
3. Priority. Group 2.
4. Modification to be Applied to. The modification is to be applied to the following vehicles:
  - a. Truck Utility Lightweight MC2.
  - b. Truck Utility Lightweight MC2 W/Winch.
  - c. Truck Panel Lightweight Survey FFR.
5. Items Affected. Rear cargo floor.
6. Action Required. By RAEME units authorised to carry out unit, field or base repairs.

TABLE 1 - STORES REQUIRED (To be demanded through Moorbank Logistic Group)

Item	NSN	Designation	Qty per Equip
(a)	(b)	(c)	(d)
1.	2540-97-121-2948	KIT MOD, Lashing Ring Kit, HYG5950 comprising of:	1
a.	HYG3861	LASHING RING, Zinc coated.	6
b.	SP106201	SCREW SLOTTED, pan head, metric coarse 6mm by 20mm LG, Zinc plated	24
c.	WA10641	WASHER, 6mm, Zinc plated	48
d.	5310-99-139-5313	NUT, Self Locking Metric coarse, 6mm, Zinc plated	24
e.	5310-66-128-4699	WASHER, Special	4
f.	MYH3547	SPACER	4

Note:

1. Some installation judgement is required as the rear floor construction does not lend itself to precise dimensions. The lashing rings will use the strength of the crossmember flanges plus the strength of the adjacent wheelarch box vertical wall, so the lashing rings need to be fitted as close as possible to the wheelarch box wall and crossmembers.

Detail

7. The modification is to be carried out as follows:
  - a. Mark out the rear floor panel on the inside as shown in Fig 1.
  - b. Identify the forward longitudinal lashing ring locations as shown in Fig 1 and grind off solid rivet indicated.
  - c. Using this hole as a datum, locate lashing ring (Item 1 from Table 1) longitudinally to the underside of the floor ensuring that the lashing ring does not foul the radius of the crossmember. If it does, move the lashing ring forward approximately 6mm as shown in Fig 2.
  - d. Move to the inside of the vehicle and mark out remaining three mounting holes and drill with 7mm drill.
  - e. Mark out centre of ring hole and cut out to 64mm diameter.
  - f. Position the lashing ring (Item 1 from Table 1) to the underside of floor and secure with items 2, 3, 4 and 6 as shown in Fig 2. Ensure the ring pivots upwards towards the front of vehicle.

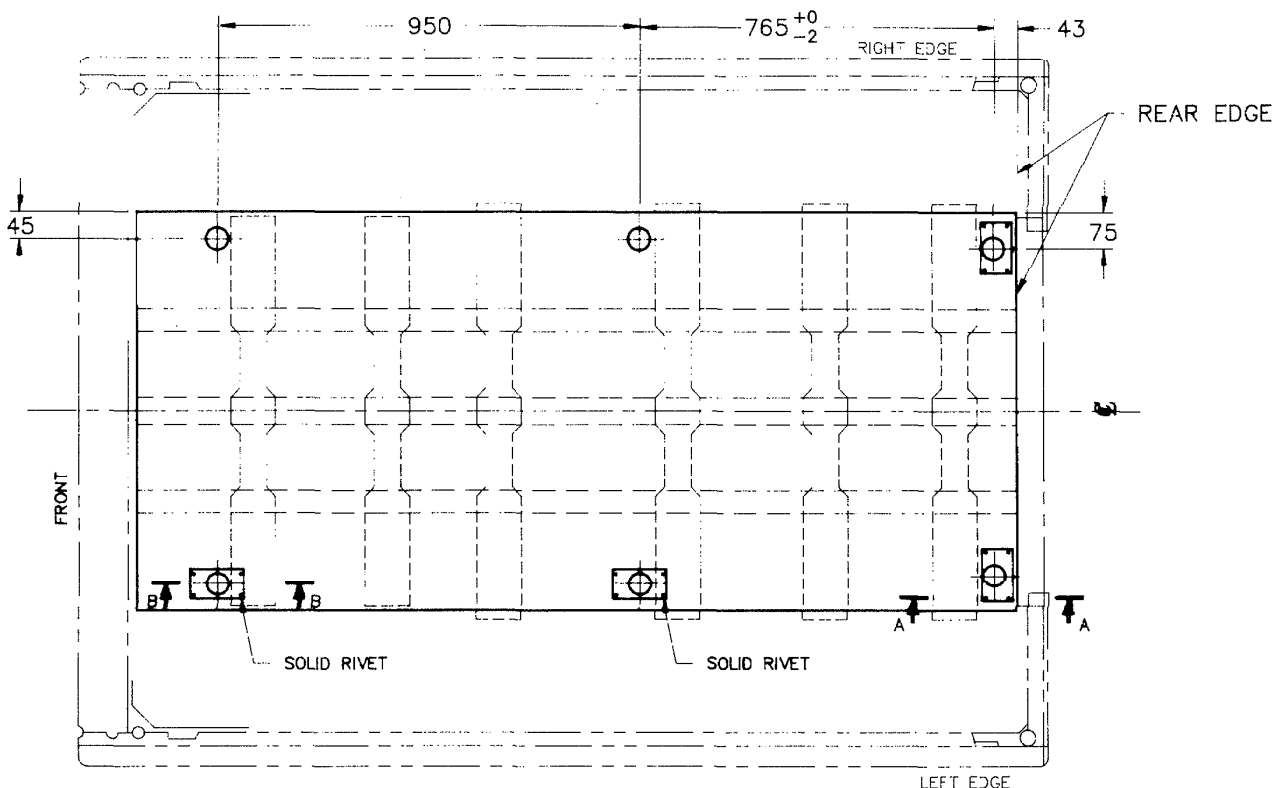


FIG 1

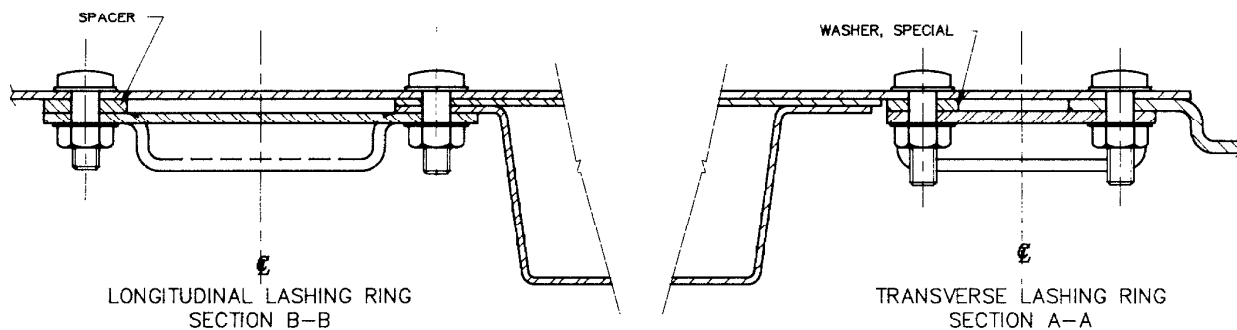


FIG 2

- g. Identify the centre lashing ring locations and repeat steps b to f.
- h. Identify the rear transverse lashing ring locations and grind off or hammer flat the aluminium rivet to provide a flat surface.
- i. Using the centre line of the lashing ring location as shown in Fig 1, mark out the rear corner mounting hole and drill with a 7mm drill.

Note:

- 1. For ease of drilling it may be necessary to remove the tailboard strap retainer on the cargo variants or the rear door lower hinge on the Survey variants.
  - j. Move to the underside of the vehicle and using the hole as a datum locate the lashing ring running across the vehicle as shown in Fig 2. Ensure the lashing ring does not interfere with the radius of steel angle strap.
  - k. Move to inside of vehicle and mark out remaining three mounting holes and drill with a 7mm drill.
  - l. Mark out the centre of ring hole and cut out to 64mm diameter.
  - m. Position the lashing ring (Item 1 from Table 1) to the underside of floor and secure with items 2, 3, 4 and 5. Ensure ring pivots to the outside of vehicle.
  - n. Stencil in 25mm lettering "SWL 250 kg per LASHING RING" onto the cargo side of the Front Panel Bulkhead in white paint.
  - o. It is to be placed centrally, 25mm from the top of the bulkhead.
8. Modification Record Plate. Deface the numeral 18 on the modification plate located on the drivers seat base.
9. Recording. Enter the details of the modification in Part Three of the TGM 120, Record Book for Service Equipment, of the subject vehicles.

E N D