

TRUCK, UTILITY, LIGHTWEIGHT, MC2 LAND ROVER 110 - ALL TYPES

REPLACEMENT OF THE MAPLIGHT SECURING CLIP
AND SECURING OF THE MAPLIGHT WIRING

MODIFICATION INSTRUCTION

Issue of this instruction is authorized by CONMEA

Introduction

1. This instruction details the fitting of an improved maplight securing clip and the securing of the maplight wiring to prevent it short circuiting on the rear of the dashboard.

Note:

1. NSN/MPN and Designation used in this instruction were current at the date of issue. If twelve months or more have expired since issue, the NSN/MPN should be checked for supersession.

General

2. Estimated Modification Time. 1.0 hr (initial planning).
3. Priority. Group 2.
4. Modification to be applied to. All subject vehicles.
5. Items Affected. Maplight securing clip and wiring loom.
6. Action Required. By RAEME units authorized to carry out unit, field and base repairs.

TABLE 1 - STORES REQUIRED (To be demanded through normal supply channels)

| Item | NSN | Designation | Qty per Equip |
|------|------------------|--------------------------|---------------|
| 1. | 5340-66-128-5862 | RETAINING HOOK, MAPLIGHT | 1 |
| 2. | 5305-66-128-4575 | SCREW | 1 |
| 3. | 5970-66-013-1809 | INSULATION SLEEVING, 7MM | As required |

TABLE 2 - STORES REMOVED (To be disposed of in accordance with EMEI GEN P series)

| Item | NSN | Designation | Qty per Equip |
|------|------------------|--------------------|---------------|
| 1. | 5340-66-128-4576 | CLAMP LOOP PLASTIC | 1 |
| 2. | AYG 9832 | BRACKET | 1 |

Detail

7. The modification is to be carried out as described below:
 - a. Remove the two screws securing the maplight clip mounting bracket to the parcel tray and discard the bracket and clip.

Note:

1. Keep the screws for use with the new clip.

UNCONTROLLED WHEN PRINTED

- b. Mark and drill the two holes on the front of the parcel tray to the dimensions shown in Fig 1.

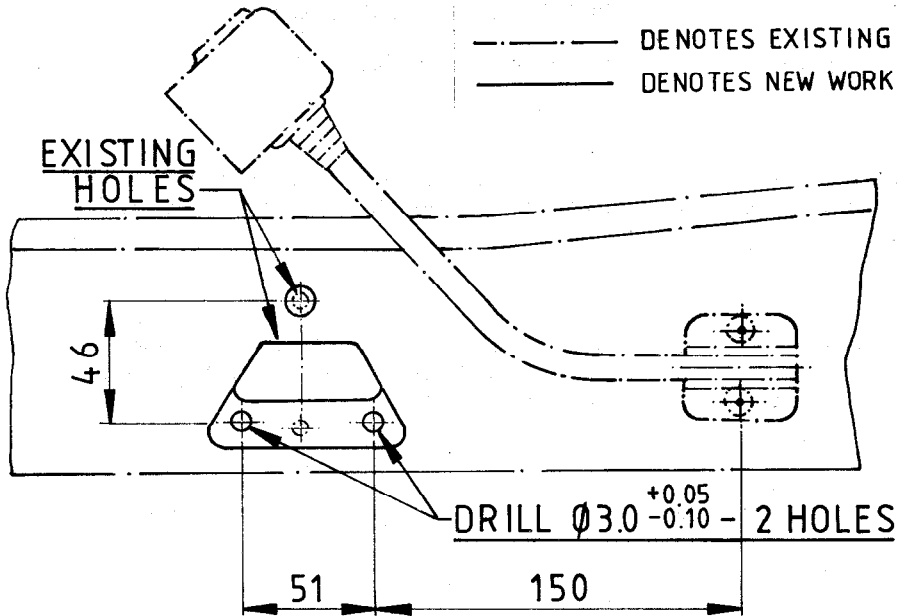


FIG 1 - DIMENSIONS MAPLIGHT CLIP

- c. Fit the new clip (item 1 from Table 1) using the original mounting screws and plug the existing hole with a screw (item 2 from Table 1).
- d. Ensure that a sleeve is fitted over the maplight wiring, see Fig 2, and that the sleeve is located in the hole in the dash.
- e. If the sleeve is located in the dash then apply insulation tape at the point shown in Fig 2.

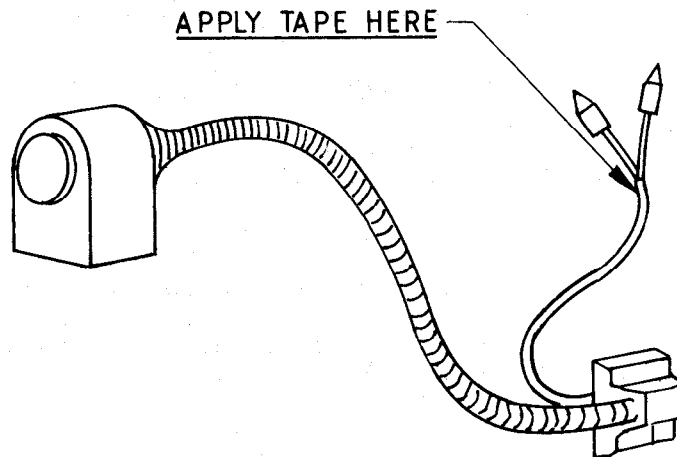


FIG 2 - MAPLIGHT WIRING

- f. If the sleeve is not located in the dash, or a sleeve is not fitted, disconnect the battery and the maplight wiring.

UNCONTROLLED WHEN PRINTED

- g. Remove the maplight securing screws and the maplight, and inspect the maplight wiring for chafing.
 - h. If chafing is evident repair the wiring and fit the sleeve (item 3 from Table 1) over and secure as shown in Fig 2.
 - i. Reconnect the maplight wiring and refit the maplight to the dash.
 - j. Reconnect the battery and test the operation of the maplight.
8. Modification Record Plate. Deface the numeral 11 on the modification plate located on the drivers seat base.
9. Recording. Enter the details of the modification in Part Three of the TGM 120, Record Book for Service Equipment, of the subject vehicles.

UNCONTROLLED WHEN PRINTED

E N D