

TRUCK HEAVY MC3 (MACK) - ALL TYPES
PROTECTION OF TOOL AND STOWAGE BOX FLOORS

MODIFICATION INSTRUCTION

Issue of this instruction is authorized by CONMEA

Introduction

1. This instruction details the fitting of timber inserts to the floor and the manufacture of a jack securing bracket to the subject vehicle's tool and stowage boxes. This is to provide protection from damage caused by loose CES items. This instruction does not apply to the dump, wrecker and transit mixer variants.

Note:

1. NSN and Designation used in this instruction were current at the date of issue. If twelve months or more have expired since issue, the NSN should be checked for supersession.

General

2. Estimated Manhours to Perform. 3.0 per tool box.
3. Priority. Group 2.
4. Modification to be Applied to. All subject vehicles except dump, wrecker and transit mixer variants.
5. Items Affected. Tool and stowage boxes.
6. Action Required. By RAEME units authorized to carry out unit, field and base repairs in accordance with WKSP A 850.

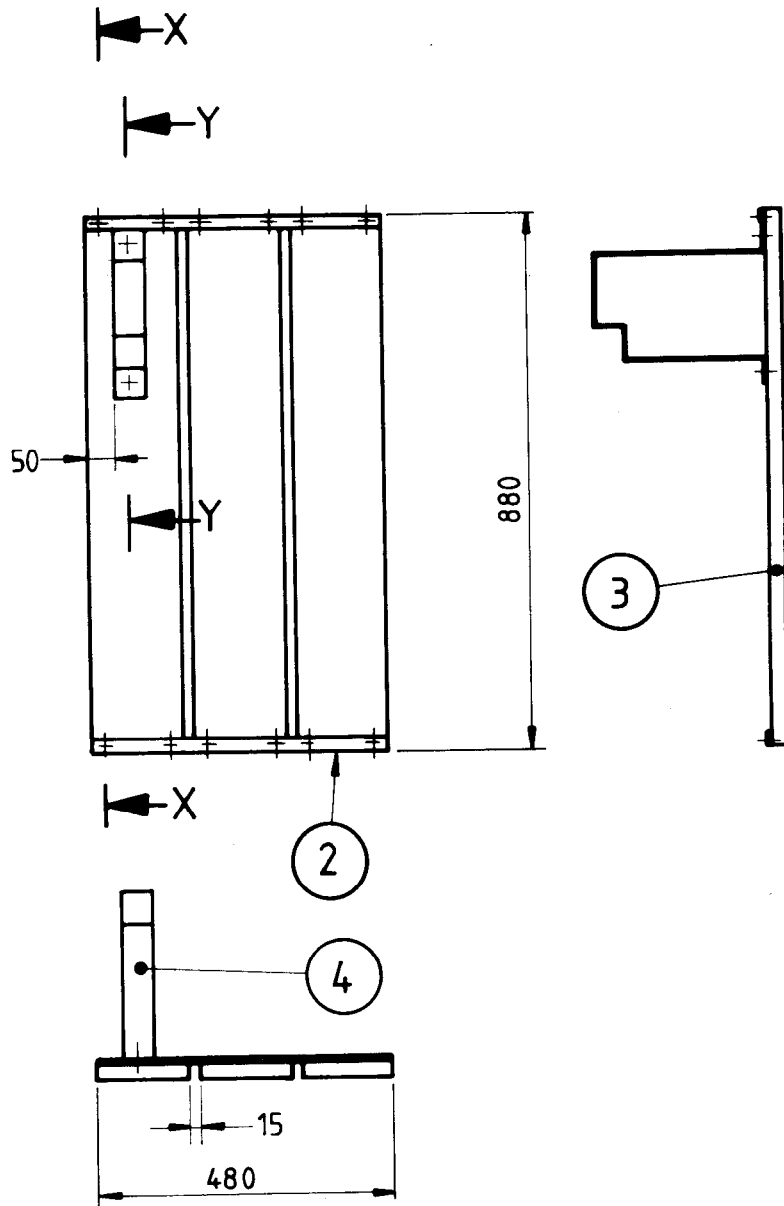
TABLE 1 - STORES REQUIRED (To be demanded through normal supply channels)

Item	NSN	Designation	Qty per Equip
1.	5305-66-012-8351	SCREW, WOOD, STEEL, FLAT CSK HD NO 12 GAUGE BY 3/4 IN	12 PER TOOL BOX
2.	9515-66-097-0446	STRIP, METAL, CARBON STEEL 25 MM WIDE BY 3 MM THICK	960 MM PER TOOL BOX
3.	5510-66-086-9687	TIMBER HARDWOOD KILN DRIED 150 MM WIDE BY 25 MM THICK	2640 MM PER TOOL BOX
4.	9515-66-097-0448	STRIP, METAL, CARBON STEEL 50 MM WIDE BY 3 MM THICK	635 MM
5.	5306-66-014-2943	BOLT SQ NECK CSK HD WITH NUT 3/8 IN BY 1-1/2 IN	2
6.	5310-66-016-5996	WASHER LOCK 3/8 IN	2

7. Stores to be Removed. Nil.

Detail

8. To carry out the modification, proceed as follows:
- a. Using the timber, metal bar and screws, items 1, 2 and 3 from Table 1, manufacture the inserts as shown in Figs 1 and 2.



SCALE 1:10

FIG 1 - TOOL BOX INSERT

UNCONTROLLED WHEN PRINTED

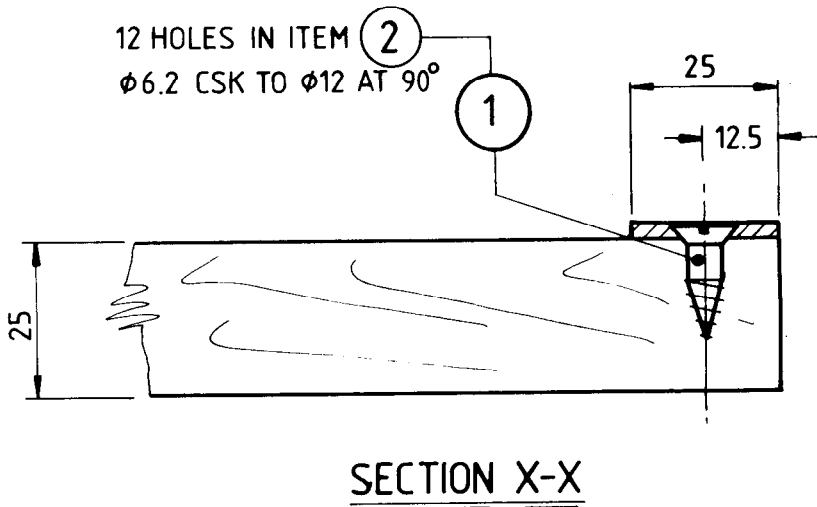


FIG 2 - METAL BAR FIXING DETAIL

- b. Bend the metal bar, item 4 from Table 1 to form the jack support bracket as shown in Fig 3.

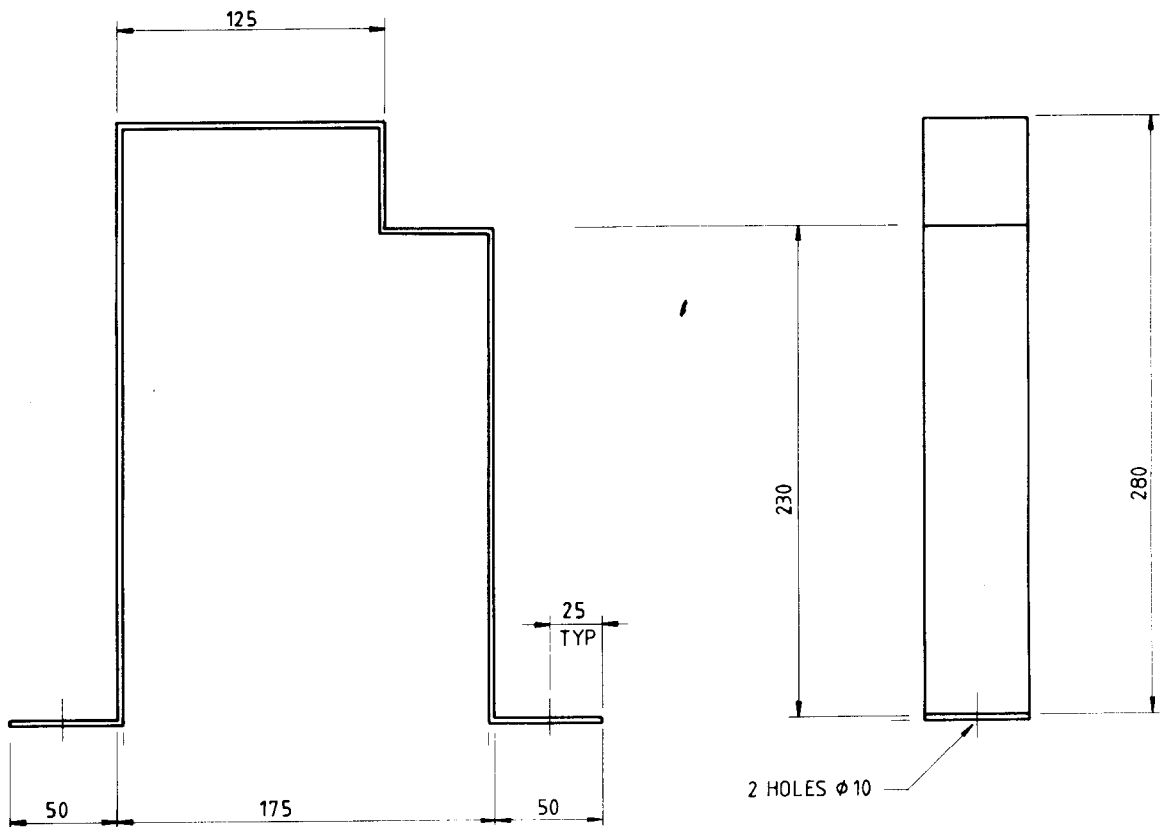


FIG 3 - JACK SUPPORT BRACKET

- c. Drill two 10 mm holes in the jack support bracket as shown in Fig 3. Secure the jack support bracket to the insert in the position shown in Fig 1 using the bolts, nuts and washers, items 5 and 6 from Table 1. Ensure that the bolt head is recessed as shown in Fig 4, to allow the timber insert to sit flat across the tool box floor.

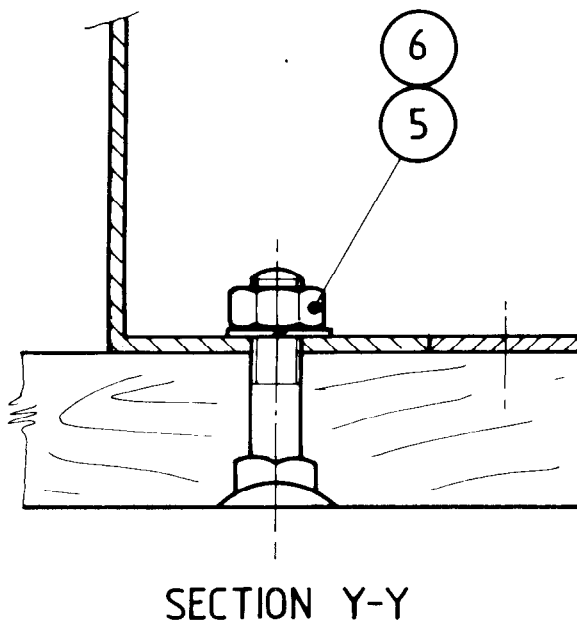


FIG 4 - JACK SUPPORT BRACKET SECURING DETAIL

- d. Fit the inserts to the tool boxes ensuring only one insert with jack retaining support bracket is fitted to each vehicle.

Modification Record Plate

9. The modification is to be recorded as follows:
- Truck Cargo/Truck Cargo Winch Heavy MC3 (Mack) deface the numeral 15.
 - Truck Cargo with Crane Heavy MC3 (Mack) deface the numeral 16.
 - Truck Ammunition/Gun Tractor Heavy MC3 (Mack) deface the numeral 15.
 - Truck Tank Fuel/Truck Water Heavy MC3 (Mack) deface the numeral 11.

E N D