

TRUCK, TRANSPORTER, FLOATING BRIDGE, MC3, W/WINCH, MACK, LAUNCH AND RECOVERY VEHICLE (LRV)

REPLACEMENT OF BLACKOUT BRACKET ON FRONT LIFT FRAME

MODIFICATION INSTRUCTION

This instruction is authorised for use by command of the Chief of Army. It provides direction, mandatory controls and procedures for the operation, maintenance and support of equipment. Personnel are to carry out any action required by this instruction in accordance with EMEI General A 001.

Introduction

1. This instruction details the replacement of the blackout headlamp bracket on the front lift frame of the Launch and Recovery Vehicle, NSN 2320-66-131-6653, to prevent modules catching on the bracket during launch and recovery of Floating Support Bridge modules.

2. **Associated Publications.** Reference may be necessary to the latest issue of the following documents:

- a. EMEI Workshop A 850 – Modifications, Trial Modifications and Local Modifications to Equipment;
- b. EMEI Workshop A 851 – Recording Modifications to Equipment – Use of Modification Record Plates and Documentary Requirements;
- c. Engineering Change Order (ECO) No EWE 5029; and
- d. EMEI General P section – Stores Procedure.

3. **Authority.** ECO No EWE 5029 is the authority to carry out this modification.

General

4. **Modification Application.** This modification is to be applied to all Launch and Recovery Vehicles.

5. **Items Affected.** This modification alters the Front Lift Frame and Inner Roller Assembly.

6. **Priority – Group 2.** All applicable equipment is to be modified:

- a. when next in a workshop for repair; or
- b. prior to issue from depot or pool stock.

NOTE

Where modification would delay priority issues of depot or pool stock, equipment may be issued unmodified providing the equipment record book is endorsed appropriately.

7. **Action Required.** Actions detailed in this instruction are to be performed by RAEME workshops authorised to carry out Medium and Heavy Grade repairs.

NOTE

On receipt of this instruction, enter all relevant information other than date completed in the modifications section of the Launch and Recovery Vehicle Record Book for Service Equipment (GM 120).

8. **Estimated Manhours.** For initial planning purposes only, it is estimated that this modification will take three manhours to perform.

9. **Stores Required.** The stores required are listed in Table 1. All stores are to be demanded through normal supply channels.

10. **Items to be Removed.** The items to be removed are listed in Table 2. All stores removed are to be processed in accordance with the EMEI General P section.

Detail

11. Modification of the Front Lift Frame and Inner Roller Assembly. The procedure is as follows:

- a. Prefabricate the replacement bracket as shown in Figure 1 from the steel detailed as Item 1 in Table 1.
- b. Remove the blackout headlamp from the existing bracket.
- c. Remove the existing bracket and install the replacement bracket, as shown in Figures 2 and 3.
- d. Refurbish the frame, ensuring all burrs are removed and then repaint the area.
- e. Attach the blackout headlamp as it was mounted on the existing bracket with mounting bolt uppermost.

- f. To prevent water pooling in the lamp cover and causing the lamp to short, drill a 2 mm hole through the cover.

Fleet Manager Engr Equip
AEMA
GPO Box 840J
MELBOURNE VIC 3001

12. **Recording Action.** On completion of the modification, the following action is to be taken:

- a. Deface the number 11 on the Launch and Recovery Vehicle modification record plate.
- b. Complete the modification details in the Launch and Recovery Vehicle Record Book for Service Equipment (GM 120).
- c. Forward the modification completion details to:

d. The return should include the following information:

- (1) Modification No: EMEI Vehicle 787-11
- (2) Unit:
- (3) ARN:
- (4) Completion Date:

Table 1 – Stores Required

Item	NSN	Designation or Description	Unit of Issue	Qty per Equip
1	NIC	Mild Steel 110 x 40 x 3 mm		1
2	NIC	5 mm Bolt c/w nut	ea	3

Table 2 – Items to be Removed

Item	NSN	Designation or Description	Qty per Equip
1	NIC	Bracket, Blackout Headlamp Mounting	1

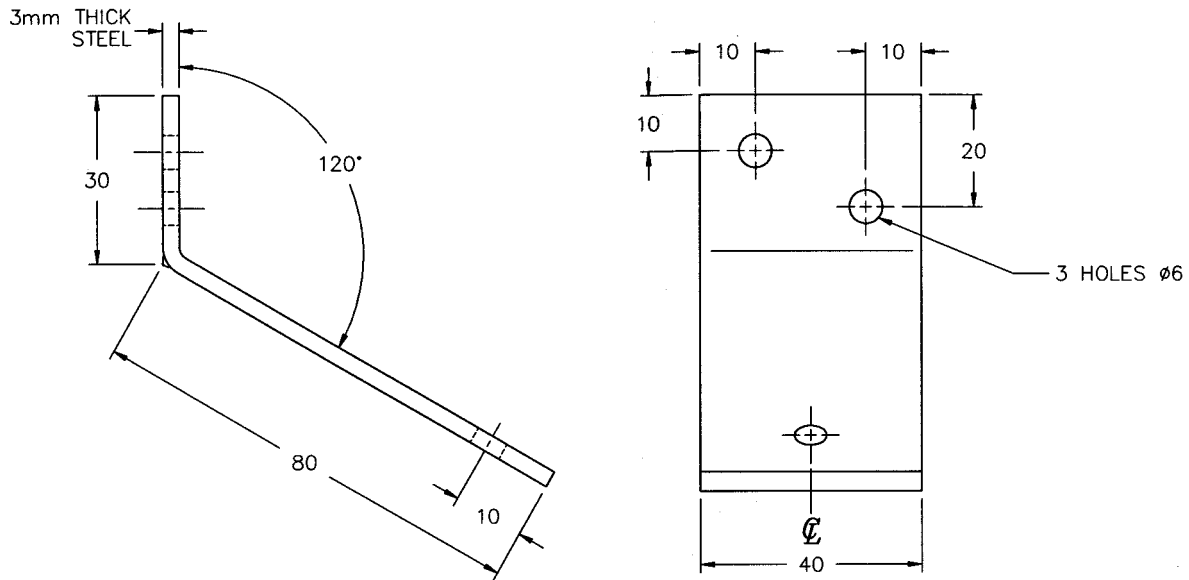


Figure 1 – Replacement Bracket, Blackout Headlamp Mounting

UNCONTROLLED WHEN PRINTED

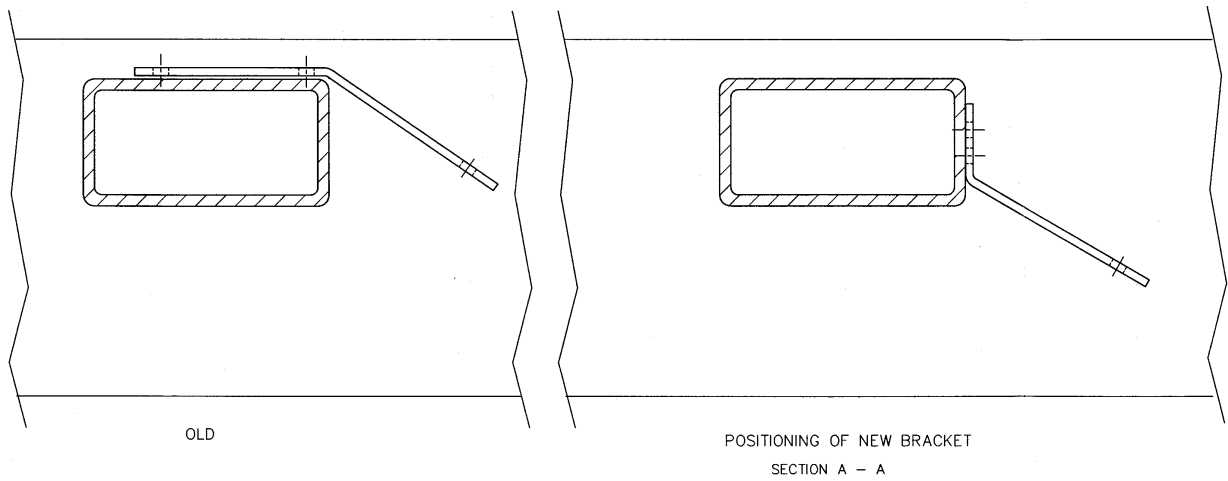


Figure 2 – Positioning of Replacement Bracket

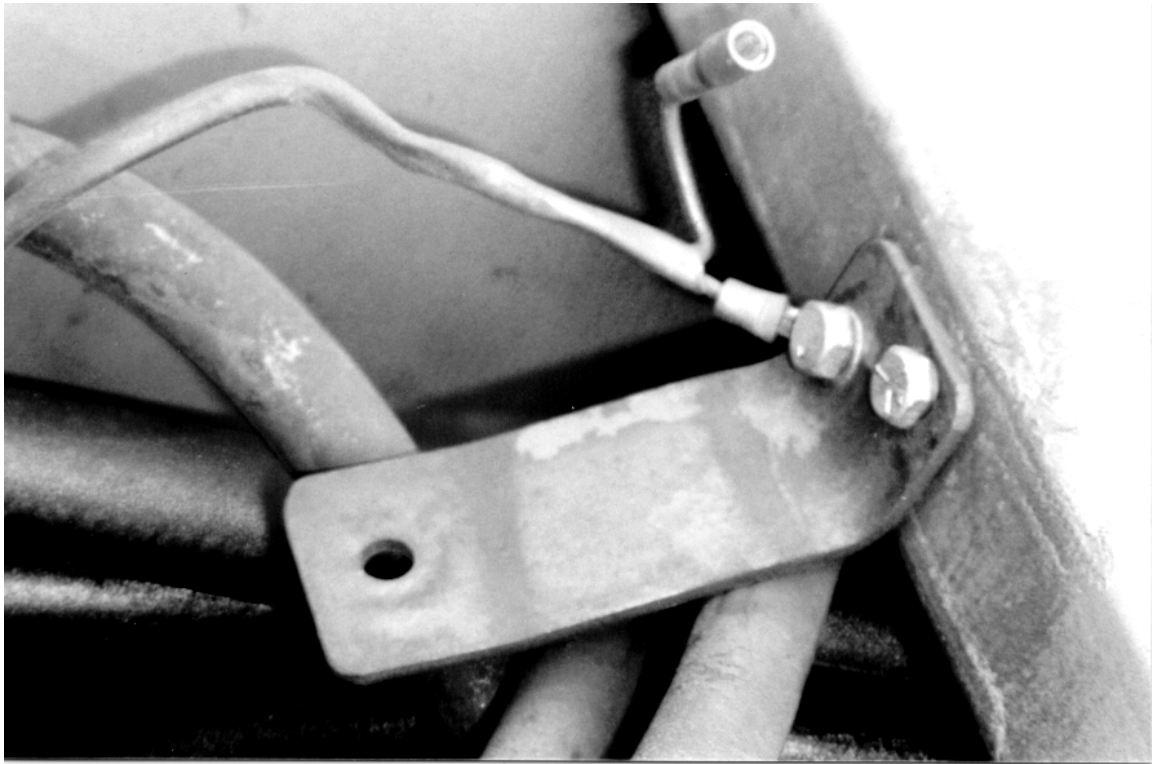


Figure 3 – Installed Replacement Bracket

UNCONTROLLED WHEN PRINTED

END
List VEH G 59.0 – Code 3 (Job No 9800515)