

TRUCK GUN TRACTOR/AMMO TRANSPORTER, HEAVY MC3 (MACK)
RELOCATION OF TAIL-LIGHT ASSEMBLIES

MODIFICATION INSTRUCTION

Reference: A. AC in WM 30355/1.

Introduction

1. This instruction details the relocation of the tail-light assemblies to reduce damage when reversing.

Note:

1. NSN and Designation used in this instruction were current at the date of issue. If twelve months or more have expired since issue, the NSN should be checked for supersession.

General

2. Estimated Manhours to Perform. 5.0 (initial planning only).

3. Priority. Group 2.

Note:

1. It is necessary to drain and remove the fuel tank to complete this modification. To avoid unnecessary wastage of fuel, where possible the modification should be performed when the fuel level is low.

4. Modification to be Applied to. All subject vehicles.

5. Item Affected. Tail-light assemblies.

6. Action Required. By RAEME workshops authorised to carry out field or base repairs in accordance with WKSP A 850.

TABLE 1 - STORES REQUIRED (To be demanded through normal supply channels)

Item	NSN	Designation	Qty per Equip
1.	5330-66-065-3220	RUBBER SHEET, 6 MM THK BY 1200 MM	AS REQUIRED
2.	5306-66-021-1665	BOLT MACHINE UNC 1/2 IN BY 2-1/4 IN LG	4
3.	5310-66-015-5043	NUT PLAIN HEXAGON UNC LOCK 1/2 IN	8
4.	5310-00-809-3079	WASHER, FLAT, RD STEEL 1/2 IN SCREW SIZE, 1-3/8 IN OD	8
5.	9520-66-097-0460	STRUCTURAL ANGLE, 51 MM BY 51 MM BY 5 MM THK	AS REQUIRED
6.	9510-66-083-5632	METAL BAR, CARBON STEEL 50 MM W BY 6 MM THK	AS REQUIRED
7.	5306-66-019-3938	BOLT MACHINE UNC 1/2 IN BY 1-1/2 IN LG	4
8.	5310-66-016-8934	WASHER FLAT RD STEEL 1/2 IN BOLT SIZE 1 IN OD	4

UNCONTROLLED WHEN PRINTED

Detail

7. Relocate the left hand tail-light assembly as follows:
 - a. Remove the tail-light and blackout lights from the light mounting bracket, noting/markings the wiring for reassembly.
 - b. Remove the mounting bracket,
 - c. Modify the mounting bracket as shown in Fig 1.
 - d. Using the modified bracket as a guide drill two 12 mm holes in the L/H toolbox/tail-light support rails, with their centres 115 mm forward of existing mounting hole centres.
 - e. Using item 1 from Table 1 manufacture twelve 40 mm circular spacers with a 12 mm hole in the centre (six for L/H, six for R/H tail-light assembly).
 - f. Fit the mounting bracket in the forward position using items 2, 3 and 4 from Table 1, with rubber spacers fitted to the bolts each side of the mounting bracket and on top of each support rail as shown in Fig 2 (tighten the bolts only sufficiently to remove vertical movement of the bracket).

Note:

1. It will be necessary to trim the lower spacers and washers to obtain sufficient clearance for the right hand mounting.
- g. Manufacture and fit (using original hardware) two support brackets using items 5 and 6 from Table 1, as shown in Figs 3 and 4.
- h. Paint in accordance with WKSP B 700.
- i. Refit lights, (trim the plastic tube protruding from the rear of the blackout light to prevent it fouling the tool box) and test.

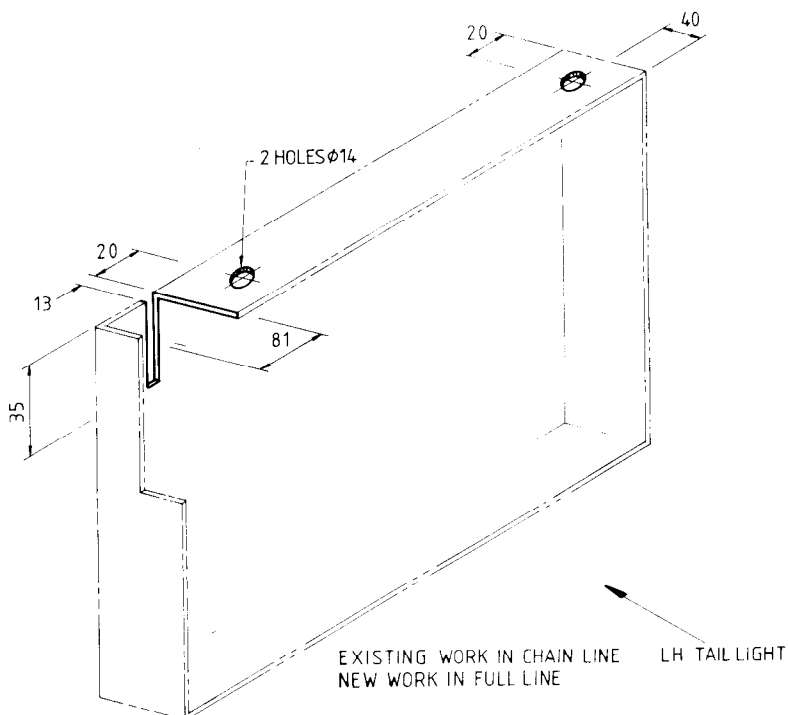


FIG 1 - MODIFIED L/H LIGHT MOUNTING BRACKET

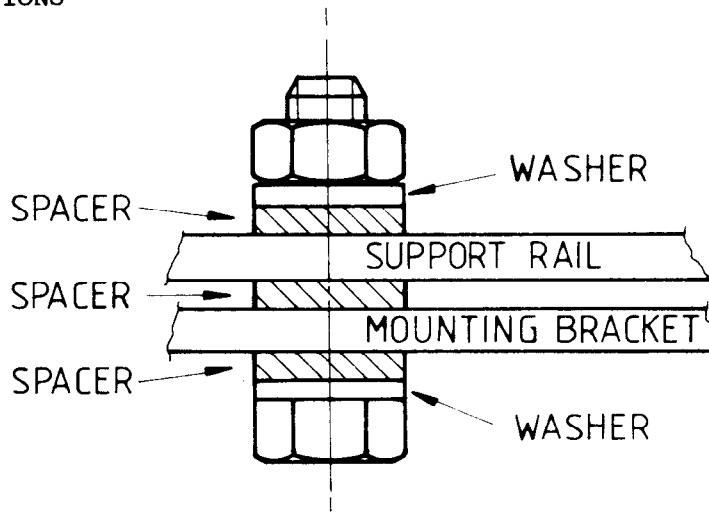


FIG 2 - BRACKET MOUNTING DETAILS

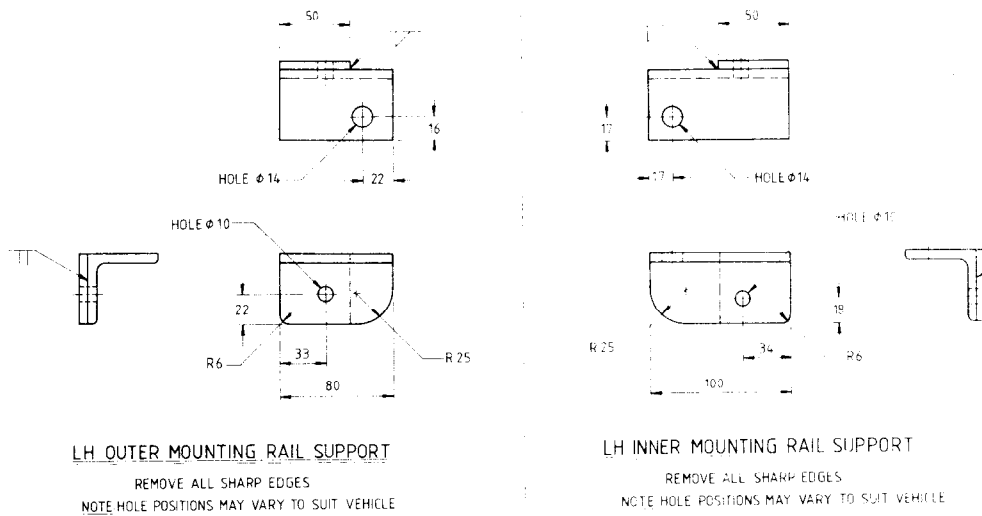


FIG 3 - SUPPORT BRACKETS

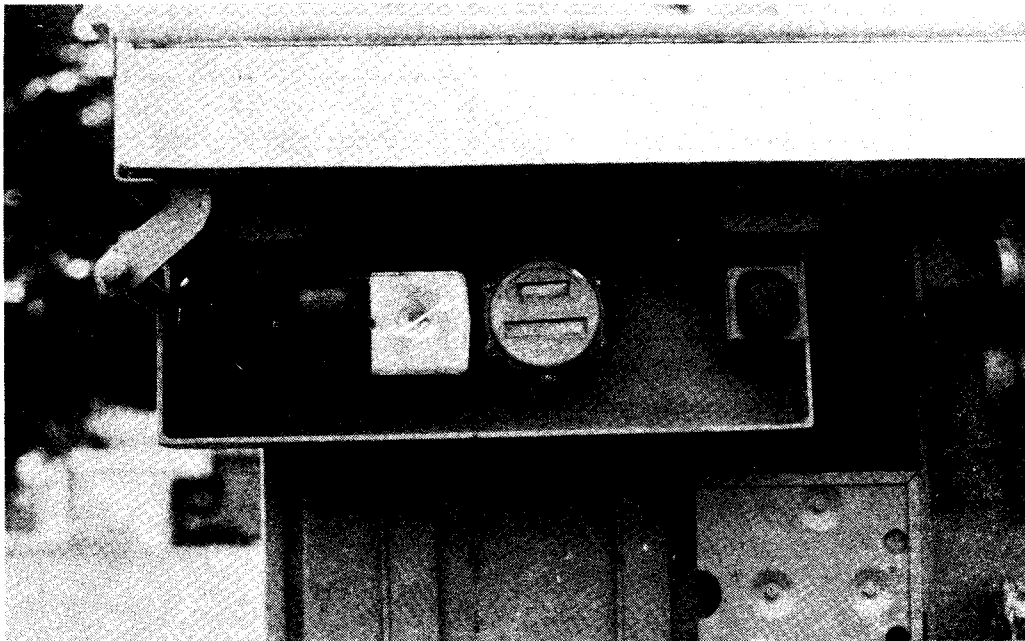


FIG 4 - RELOCATED L/H LIGHT ASSEMBLY

8. Relocate the right hand tail-light assembly as follows:
- Remove the tail-light and blackout lights from the light mounting bracket noting/markings the wiring for reassembly.
 - Drain and remove the fuel tank.
 - Manufacture two tail-light mounting bracket support rails as shown in Fig 5 using item 5 from Table 1.
 - Fit the outer support rail to the truck (14 mm hole to the rear) using the original light mounting bracket outer bolt hole (vertical surface of angle iron is towards the centre of the truck) secure using items 3, 7 and 8 from Table 1.
 - With the rail parallel to the tray centre line and using the rail as a guide drill a 12 mm hole and secure the rail to the tray member above the fuel tank position using items 3, 7 and 8 from Table 1.
 - Drill a 12 mm mounting hole for the inner support rail in the underside of the rear tray member with its centre 350 mm from the outer rail rear mounting bolt hole centre.
 - Fit the inner support rail (vertical surface towards R/H side of tray) to the new rear mounting hole using items 3, 7 and 8 from Table 1.
 - With the rail parallel to the tray centre line drill a 12 mm hole and secure the rail to the tray member above the fuel tank position using item 3, 7 and 8 from Table 1.
 - Secure the light mounting bracket to the support rails (the drilling of a 12 mm hole in the bracket to align with the bolt hole in the inner support rail is necessary) as for sub-paragraph 7f.
 - Refit the fuel tank.
 - Paint in accordance with WKSP B 700.
 - Refit the lights (trim approximately 20 mm from the plastic tube protruding from the rear of the blackout light to prevent it fouling the fuel tank).
 - Test operation of the lights.

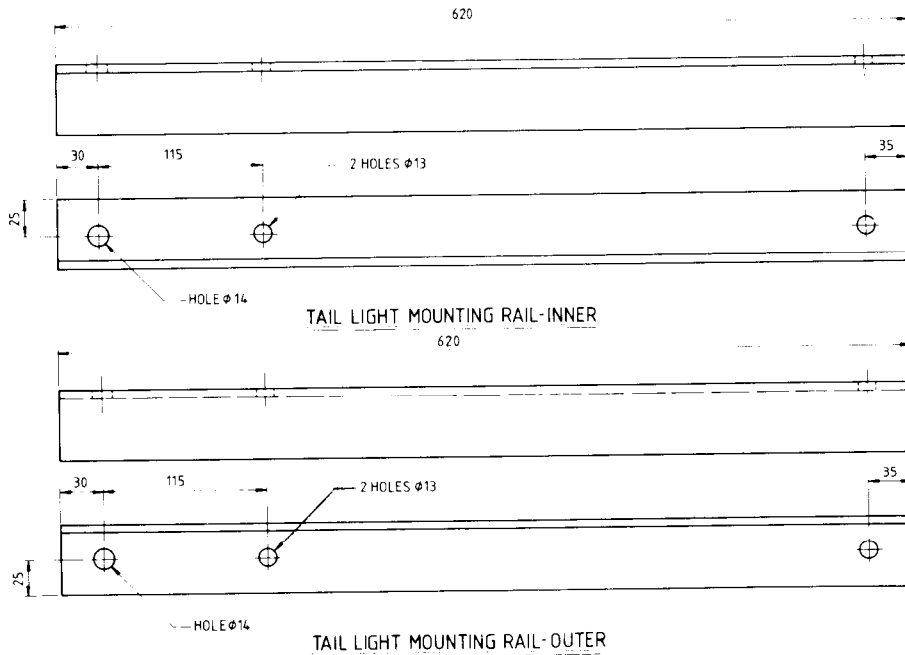


FIG 5 - R/H TAIL-LIGHT ASSEMBLY SUPPORT RAILS
RESTRICTED

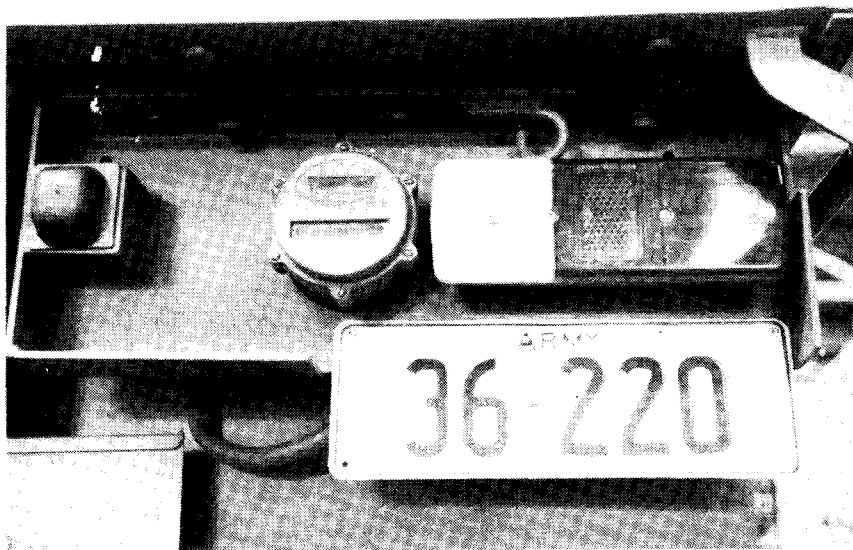


FIG 6 - RELOCATED R/H TAIL-LIGHT ASSEMBLY

Modification Record Plate

9. Deface the numeral 6 on the modification record plate mounted on the spare wheel carrier, adjacent to the operator's warning plate.

E N D

UNCONTROLLED WHEN PRINTED