

TRUCK, DUMP, MEDIUM, WINCH, MC2 – UNIMOG

ENGINEER'S TOOL CAGE

MODIFICATION INSTRUCTION

This instruction is authorised for use by command of the Chief of Army. It provides direction, mandatory controls and procedures for the operation, maintenance and support of equipment. Personnel are to carry out any action required by this instruction in accordance with EMEI General A 001.

INTRODUCTION

1. The Engineer's Tool cage was fitted to the UNIMOG Dump as part of a capability enhancement. The hinge on the door poses a potential hazard in the current configuration as the door can fall from the cage unintentionally. This instruction details the modification process to ensure the door can only be removed through deliberate, intentional action.
2. **Associated Publications.** Reference may be necessary to the latest issue of the following documents:
 - a. Current version of the Technical Regulation of Army Materiel Manual-Land (TRAMM-L) (<http://intranet.defence.gov.au/armyweb/Sites/DTRA>);
 - b. Electronic Supply Chain Manual (ESCM);
 - c. [EMEI Vehicle G 619-23](#), Truck, Medium, MC2 - Unimog - All Types - Combat Engineer Tool Cages; and
 - d. Defence Road Transport Instructions (DRTI).
3. **Authority.** CGSVSPO ECP 035/10 is the authority to carry out this modification.

GENERAL

4. **Modification Application.** This modification is to be applied to all Engineer's Tool cages built in accordance with EMEI Vehicle G 619-23.
5. **Items Affected.** This modification alters the top door hinge of the Engineer's Tool Cage.
6. **Priority – Group 2.** All applicable equipment is to be modified when next in a workshop for Light, Medium or Heavy Grade Repair.
7. **Action Required.** Actions detailed in this instruction are to be performed by technical maintenance organisations authorised to carry out Light, Medium or Heavy Grade repairs by tradespeople ECN – 229 Vehicle Mechanic, 235 Welder or 146 Fitter/Armourer, or tri-Service/Civilian equivalent.
8. **Estimated Workhours.** For initial planning purposes only, it is estimated that this modification will take 1.0 workhours to perform.
9. **Stores Required.** The stores required are listed in Table 1. All stores are to be demanded through normal supply channels.

Table 1 Stores Required

| Item | NSN | Mfr Part No | Designation or Description | Unit of Issue | Qty per Equip |
|------|------------------|-------------|---|---------------|---------------|
| 1 | 5313-99-944-0183 | | Pin, Cotter, Phosphate, 1/8 IN. NOM DIA, 1-1/4 IN. LG | EA | 1 |

UNCONTROLLED IF PRINTED

DETAIL

10. **Modification of the Engineer's Tool Cage.** The procedure is as follows:

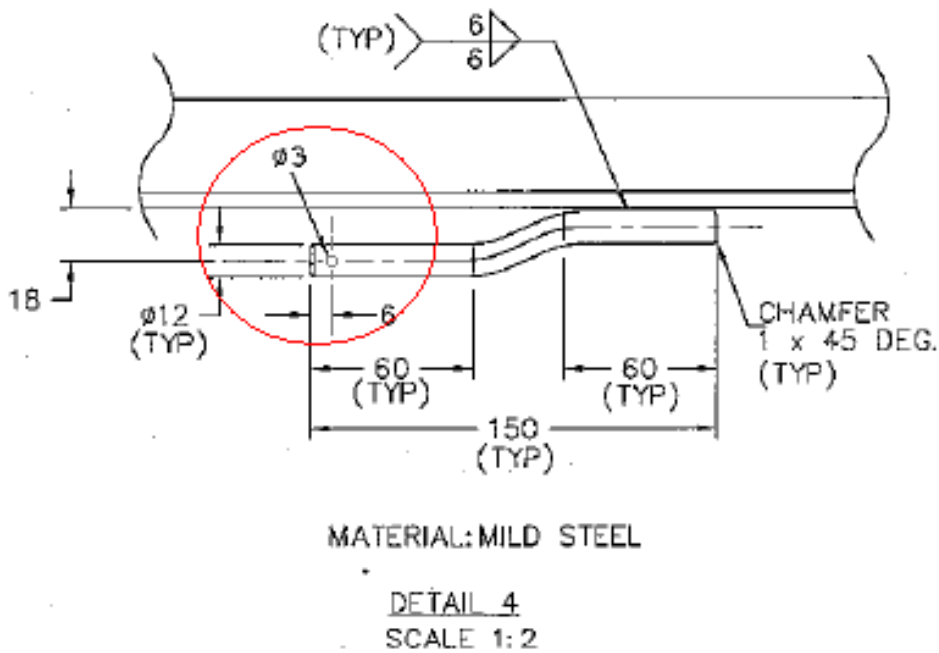
NOTE

The drawing excerpts, Figure 1 and Figure 2, are from the Engineer's Tool Cage - MEA 1755 drawing set.

11. Drill a 3 mm hole through the shaft of the left side hinge pivot pin 6 mm from the end as detailed in Figure 1.

NOTE

Modifications to detail 4 from drawing MEA 1755 - 2 are circled in red.



UNCONTROLLED IF PRINTED

Figure 1 Modification Detail for Left Hand Hinge Pin Shaft

12. Shorten the left hand hinge sleeve end as detailed in Figure 2. This enables the hinge pin shaft to protrude sufficiently to fit a split pin through the previously drilled hole detailed in Figure 1.

NOTE

Modifications to drawing MEA 1755 - 3/4 are circled in red.

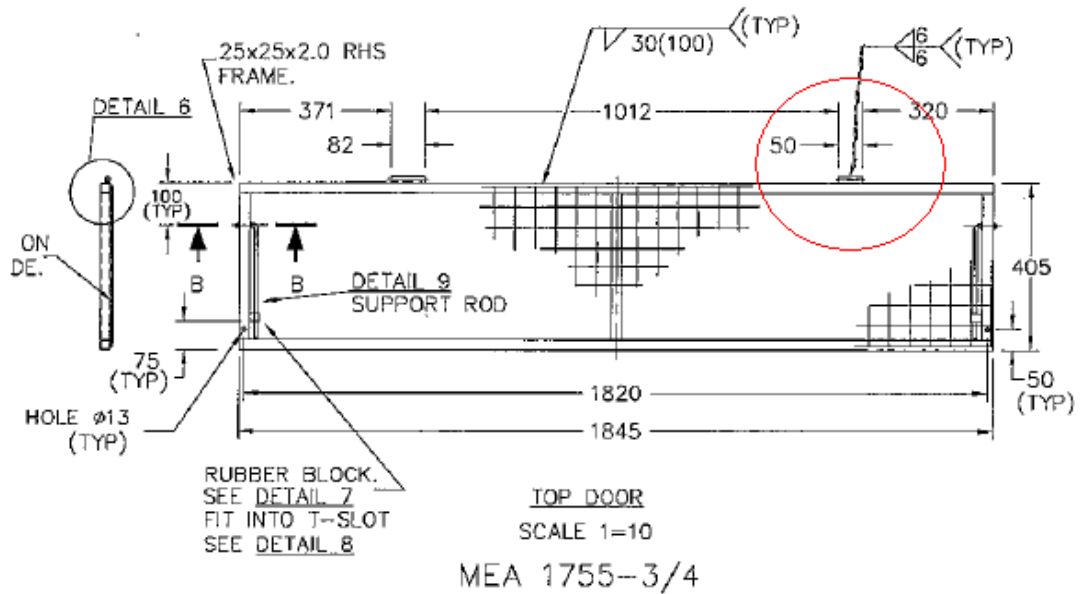


Figure 2 Modification Detail For Left Hinge Sleeve

13. Refit the door to the cage and fit a split pin (Table 1, Item 1) to the left hinge pin shaft to prevent the door from sliding off the hinge pin shaft.

UNCONTROLLED IF PRINTED

END

Distribution List: **VEH G 53.0 – Code 2** (Maint Code)
(Sponsor: CGSV SPO, Mdm/Hvy B Veh)
(DMO Job No Auth No: CGSVSPO ECO No 035/10)