

TRUCK CARGO MEDIUM MC2 (UNIMOG) - ALL TYPES

FITTING ADDITIONAL BLACKOUT DRIVING LIGHT

MODIFICATION INSTRUCTION

This instruction is authorised for use by command of the Chief of the General Staff. It provides direction, mandatory controls and procedures for the operation, maintenance and support of equipment. Personnel are to carry out any action required by this instruction in accordance with GENERAL A 001.

**Introduction**

1. Light from the single front blackout driving light is blocked to the left roadside by the lift towing eye and the winch (where fitted). This instruction details the fitting of an additional blackout driving light to the front left hand side of the vehicle to cast sufficient light to aid driving at night under blackout conditions.

**NOTE**

NSN and designations used in this instruction were correct at the time of issue. If 12 months or more have passed since issue then the NSN should be checked for supersession.

2. **Authority.** Minute DWVP-A 1042/91 is the authority to carry out this modification to the equipment detailed in paragraph 5.

**General**

3. **Estimated Manhours to Perform.** 1.0 (initial planning only).

4. **Priority - Group 2.**

- a. All equipments on issue to units are to be modified when next in workshop for servicing/repair.
- b. All equipments held by supply depots should normally be modified before issue. However, where this would delay priority issue, equipments may be released

unmodified provided the Record Book for Service Equipment - Army (GM 120) is endorsed with details of the outstanding modification.

5. **Modification to be Applied to.** All subject vehicles.

6. **Items Affected.** Front blackout driving light wiring.

7. **Action Required.** By RAEME workshops and support elements, authorised to carry out unit, field and base repairs, in accordance with WORKSHOP A 850.

**Detail**

8. Modification procedure is as follows:

- a. Using item 5 from Table 1, manufacture the bracket as shown in Figure 1.
- b. Prime and paint the bracket in accordance with WORKSHOP B 700 series.
- c. Mount blackout light to the front bumper of vehicle using the manufactured bracket and items 3 and 4 from Table 1 (see Figure 2).
- d. Connect both front blackout driving lights in parallel using items 1 and 2 from Table 1 and route the interconnecting wire through the bumper mounting plate to afford protection.
- e. Test the blackout circuit for correct operation.

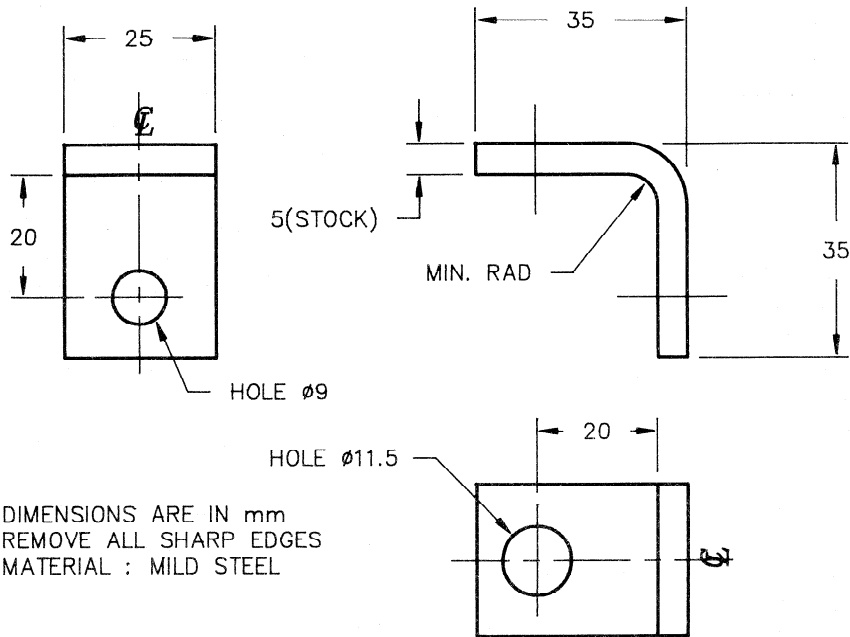
Table 1 - Stores Required (To be demanded through normal supply channels)

Item	NSN	Designation	Qty per Equip
1	5970-66-013-2461	SLEEVING, 5 mm, BLACK	As required
2	6145-66-018-3949	WIRE, ELEC, 3 mm, YELLOW	As required
3	6220-12-121-7310	HEADLAMP, BLACKOUT	1
4	6240-00-295-2668	LAMP, 24V, 32CP	1
5	9510-66-097-0450	STEEL, FLAT, 25 mm by 5 mm	As required

UNCONTROLLED WHEN PRINTED

**Modification Record Plate**

9. On completion of the modification, deface numeral 27 on the record plate situated at the base of the driver's seat and record details of the modification in the Record Book for Service Equipment - Army (GM 120).



**Figure 1 - Blackout Light Mounting Bracket (Specification)**



**Figure 2 - Additional Blackout Light (Fitted Location)**

**END**

List VEH G 35.0 - Code 4 (MEA 870140)