

TRUCK MEDIUM MC2 (UNIMOG) - ALL TYPES
TRAY SEAT LEGS AND STOWAGE STRAP

MODIFICATION INSTRUCTION

Issue of this instruction is authorised by the CONMEA.

Introduction

1. This instruction details strengthening of the tray seating assemblies to prevent loss of the seat leg assemblies and the seat stowage straps.

General

2. Estimated Manhours to Perform. 2.0 (initial planning only).
3. Priority. Group 2.
4. Modification to be Applied to. All subject vehicles up to and including ARN 43219.
5. Items Affected. Rear tray seat assemblies.
6. Action Required. By RAEME units authorised to carry out unit, field and base repairs, in accordance with WKSP A 850.

TABLE 1 - STORES REQUIRED (To be demanded through normal supply channels)

Item	NSN	Designation	Qty per Equip
(a)	(b)	(c)	(d)
1.	9520-66-097-0454	STRUCTURAL ANGLE, STEEL 25MM BY 25MM BY 3MM THK	as required
2.	NIC	SCREW M5 BY 35MM LG	8
3.	NIC	WASHER 5MM ID	16
4.	NIC	NUT M5	8

Detail

7. Modification procedure is as follows:
 - a. Refer to Fig 1 and confirm if the necessary additional welds have been applied to the seat leg supports (some trucks have been welded in production). Remove and weld brackets where required.
 - b. Using Fig 2 as a guide, place the seats and legs in the stowed position, weld a piece of angle iron (item 1 Table 1) to the bottom of each set of three seat legs. Lower seats and check seat leg operation.
 - c. Remove the self tapping screw securing each seat stowage strap and using a 6.5mm drill, drill a hole through the seat where the securing screw was located.
 - d. Secure each stowage strap using items 2, 3 and 4 from Table 1.
 - e. Paint all welded components in accordance with WKSP B 700.

UNCONTROLLED WHEN PRINTED

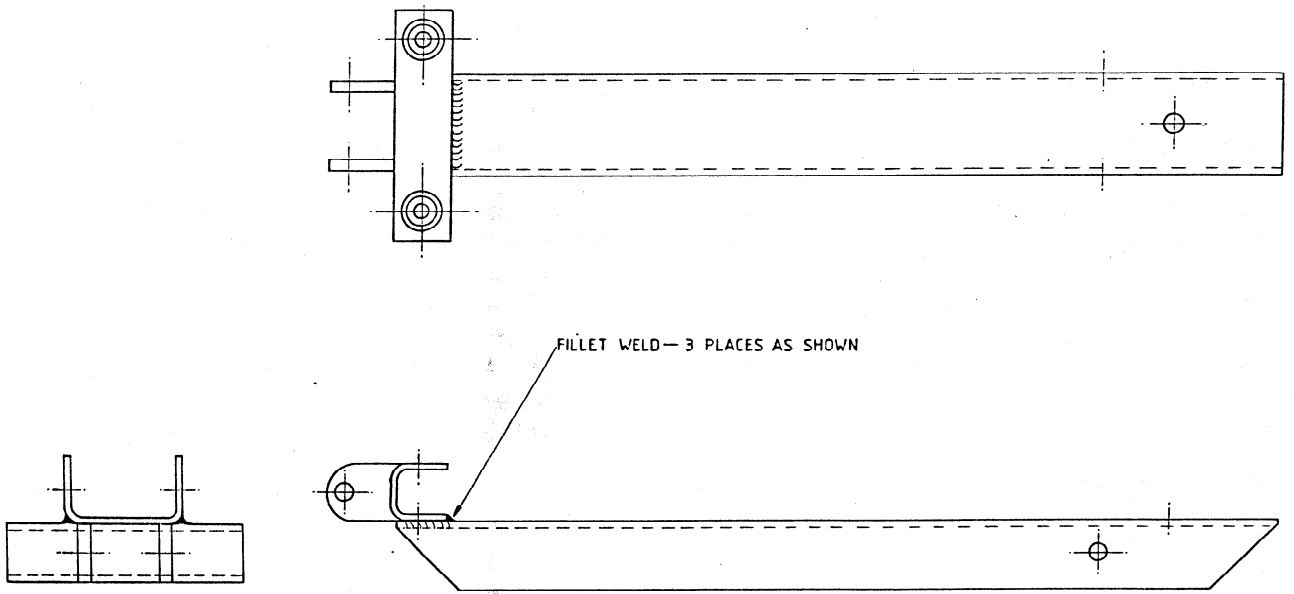


FIG 1 - SEAT LEG SUPPORT WELDING DETAILS

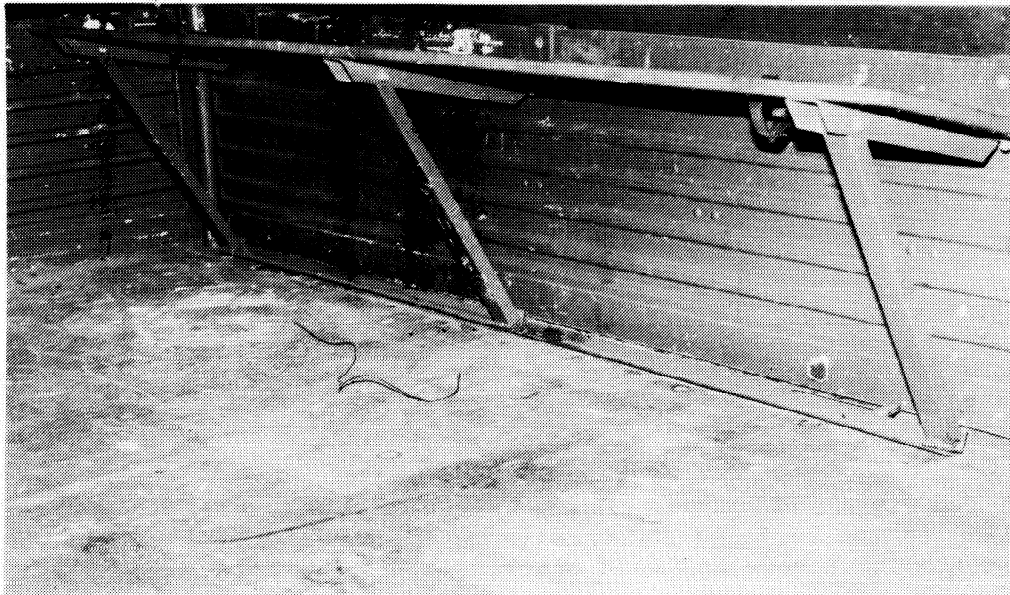


FIG 2 - WELDING OF STRUCTURAL ANGLE TO SEAT LEGS

Modification Record Plate

8. On completion of the modification deface the numeral 19 from the modification plate located on the drivers seat base.

E N D

Class 25.0 - Code 4 (MEA 22/87)