

WATER DESALINATION EQUIPMENT  
REVERSE OSMOSIS, 10 000 LPH CAPACITY  
TRAILER MOUNTED  
(NSN 4620-66-128-2333)

DATA SUMMARY

Introduction

1. The reverse osmosis water purification equipment is a self contained trailer mounted unit that produces potable water from a brackish water source of up to 7 500 mg/l Total Dissolved Solids (TDS) content at a nominal rate of 10 000 litre per hour (lph).

General Description

2. The water purifier consists of a 30 KVA generator set fitted with modified fuel filler cover and access doors, four reverse osmosis pressure vessels, a high pressure pump and 22kW electric motor, a cleaning tank pumps motor and associated plumbing.

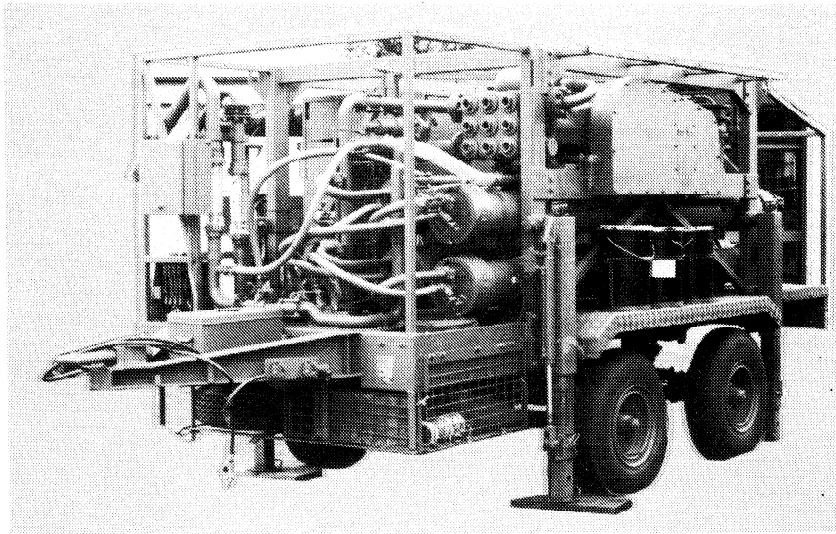


FIG 1 - WATER DESALINATION EQUIPMENT,  
TRAILER MOUNTED 10 000 LPH, REVERSE OSMOSIS

General Data

- |  |   |                   |                             |   |
|--|---|-------------------|-----------------------------|---|
| 3. <u>Mass.</u>  | : | 6 980 kg          | 5. <u>Tyres and Wheels.</u> |   |
| 4. <u>Dimensions.</u>                                    |   |                   | a. Wheels                   | : 7.50 by 15, six stud  |
| a. length overall  | : | 6100 mm           | b. Tyre type and size       | : 8.25 by 15 radial<br>18 ply with tubes  |
| b. Width overall   | : | 2400 mm           | c. Tyre pressure            | : 690 kPa   |
| c. Height overall  | : | 2390 mm           | 6. <u>Suspension.</u>       | A dual axle, leaf spring<br>suspension fitted with an air<br>braking system, component<br>specification is: |
| d. Ground clearance                                      | : | 330 mm            | a. Axle                     | : BWP Pt No 01100131  |
| e. Lunette height  | : | 830 mm            | b. Springs                  | : 7 leaf, 4 in wide by<br>0.5 in thk  |
| f. Weight transferred to tow-<br>ing vehicle via lunette | : | 300 kg<br>maximum | c. Brakes                   | : air actuated<br>drum brakes   |
| g. Angle of approach                                     | : | 10 degrees        |                             |   |
| h. Angle of departure                                    | : | 20 degrees        |                             |   |

7. Hydraulic Stabilisers.

- a. Linear actuator : Moore Slimline  
model AG-3-20
- b. Control valves : Hydro Control  
HC D2/4
- c. Pump : Monarch model  
PM 30-00-000
- d. Filter : HYDAC RF-P-30-G-1  
O-A-1.1
- e. Filter element : HYDAC 0030R010P

8. Reverse Osmosis (RO) Modules.

- a. RO Elements : Hydronautics  
model 8540-MSY-CAB2
- b. RO Pressure tubes : Hydronautics  
model 8511

9. Anti-Scalant Dosing Pump.

- a. Pump : Permutit  
model SD18-PC
- b. 3 way Solenoid : ASCO RR320A186
- c. Air Compressor : ASF diaphragm  
compressor,  
model 8050-14

10. Cleaning Pump.

- a. Pump : Kelair - API 31655  
centrifugal pump
- b. Electric motor : ASEA, 4kW, 2900rpm,  
415V, 50Hz, 3 phase,  
TEFC, weather-proof

11. High Pressure Pump.

- a. Pump : Wheatley model P350B  
fitted with alloy  
pump head
- b. Electric motor : ASEA, 22kW, 960rpm  
415V, 50Hz, 3 phase,  
TEFC, weatherproof  
and tropicproof

12. 30 KVA Generator Set.

- a. Diesel engine : Deutz model F5L413FR
- b. Generator : Dunlite model 15S3D25

13. Associated Information.

- a. SCES :
- b. RPS : 17109
- c. Liability Code : 10900/00

E N D